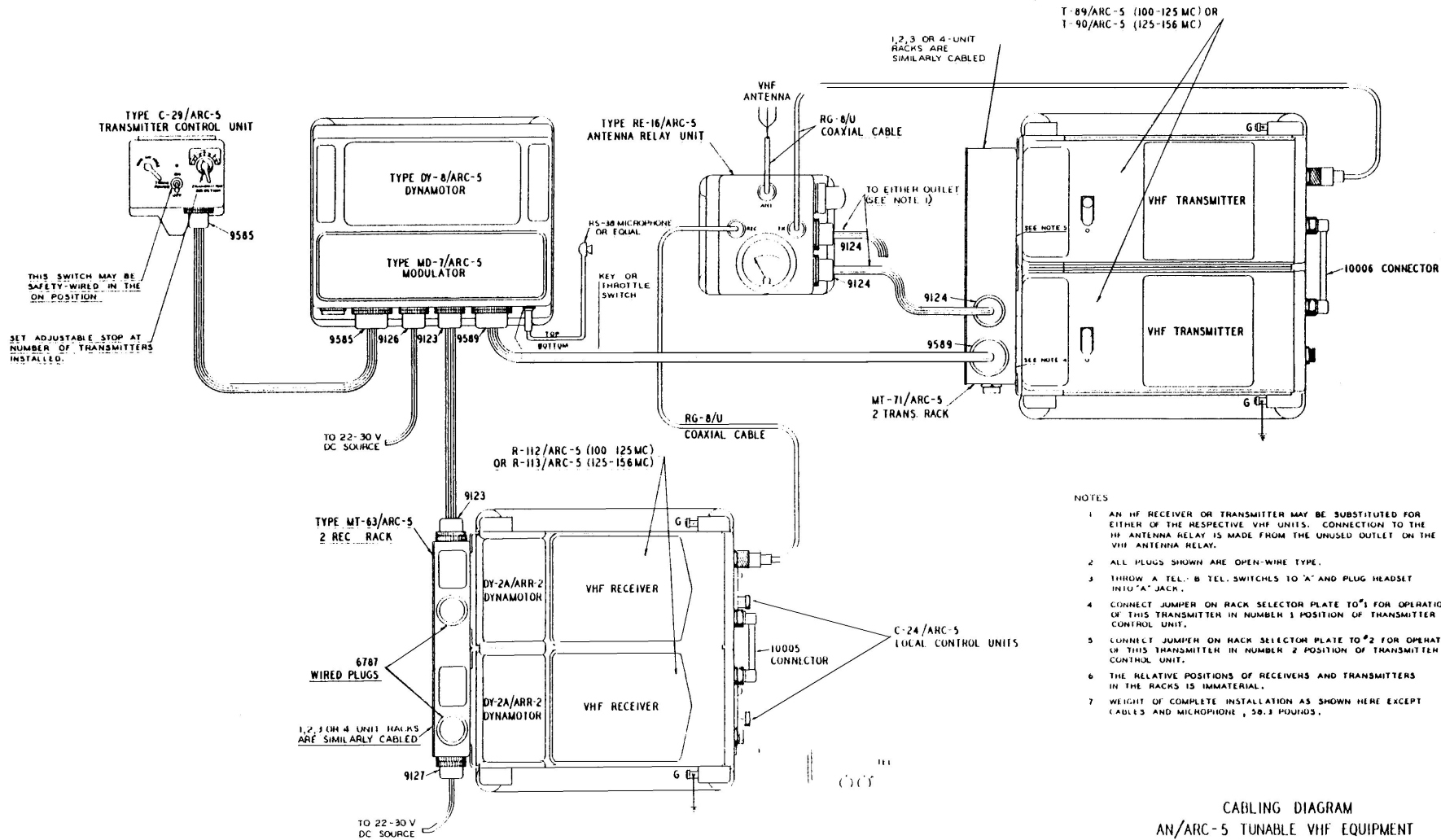
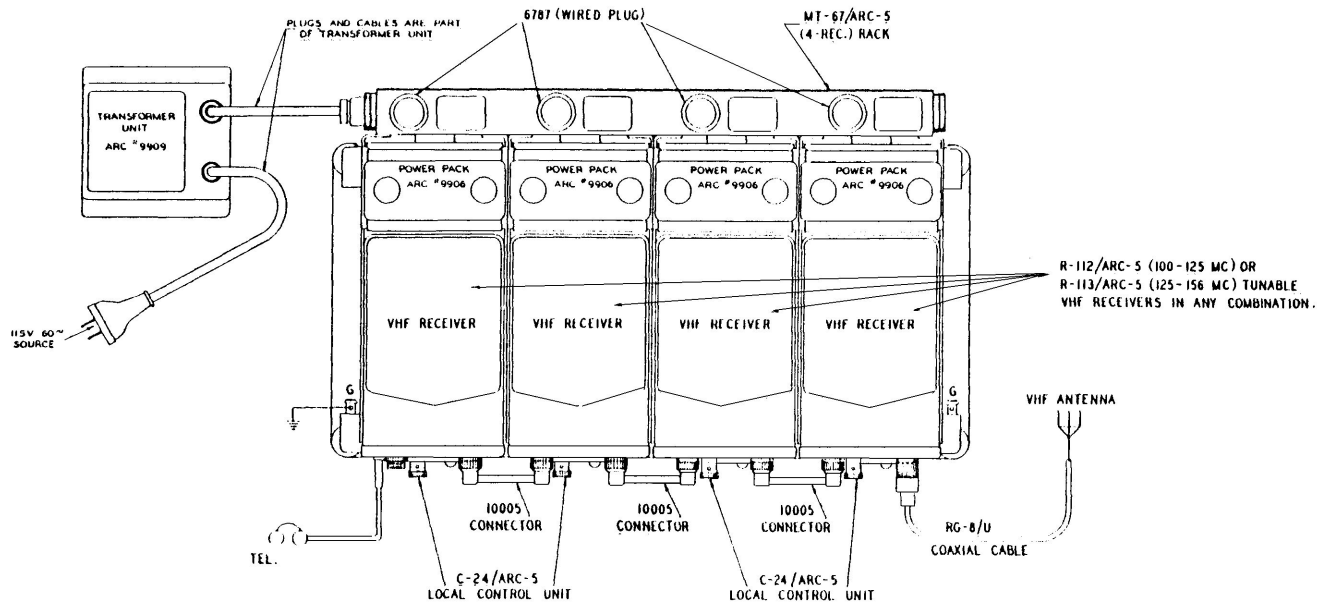


CABLING FOR A COMBINATION OF AN/ARC-5 TUNABLE VHF AND LF-MF-HF UNITS FOR REMOTE CONTROL



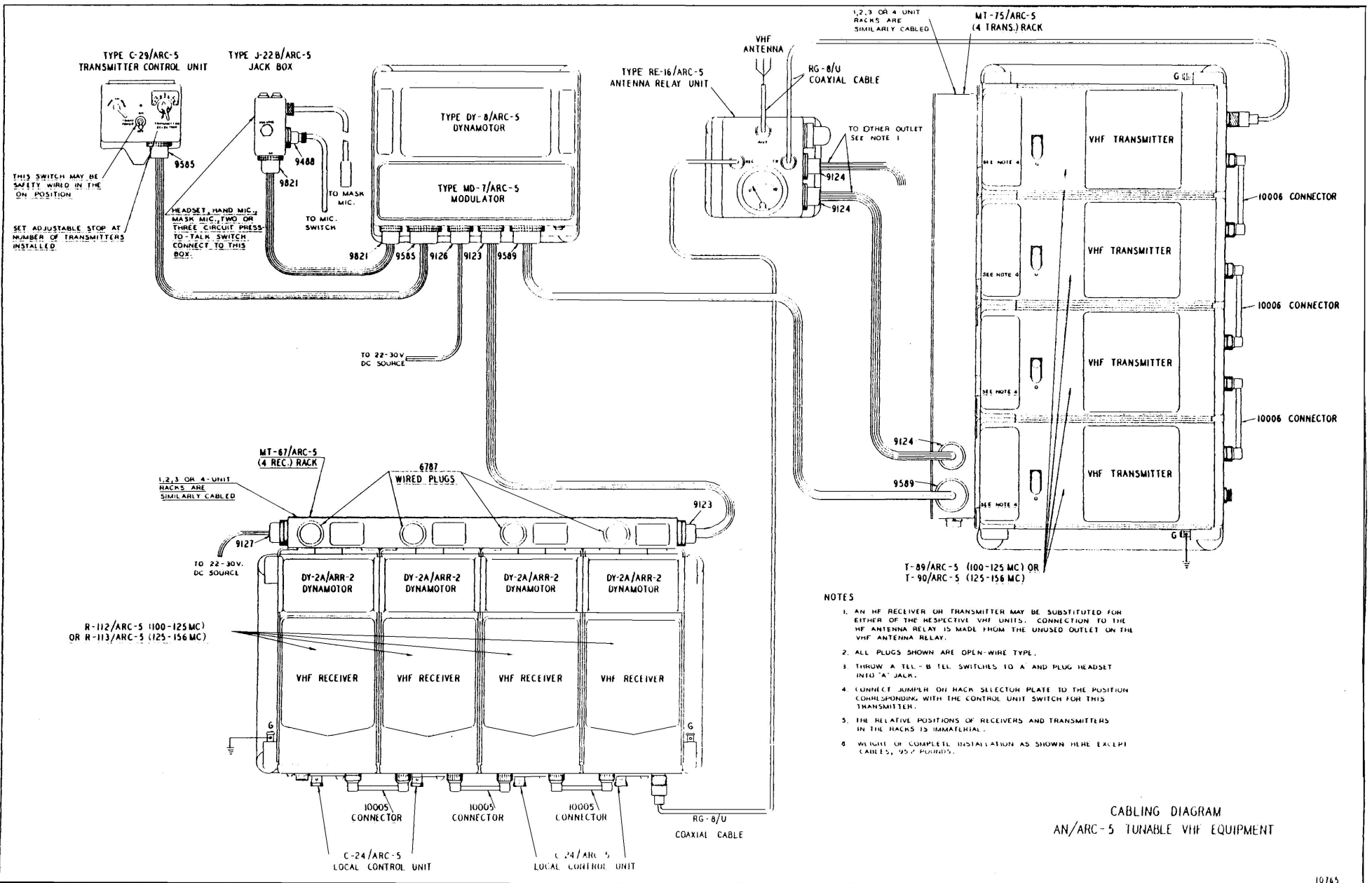
CABLING DIAGRAM
AN/ARC-5 TUNABLE VHF EQUIPMENT



NOTES

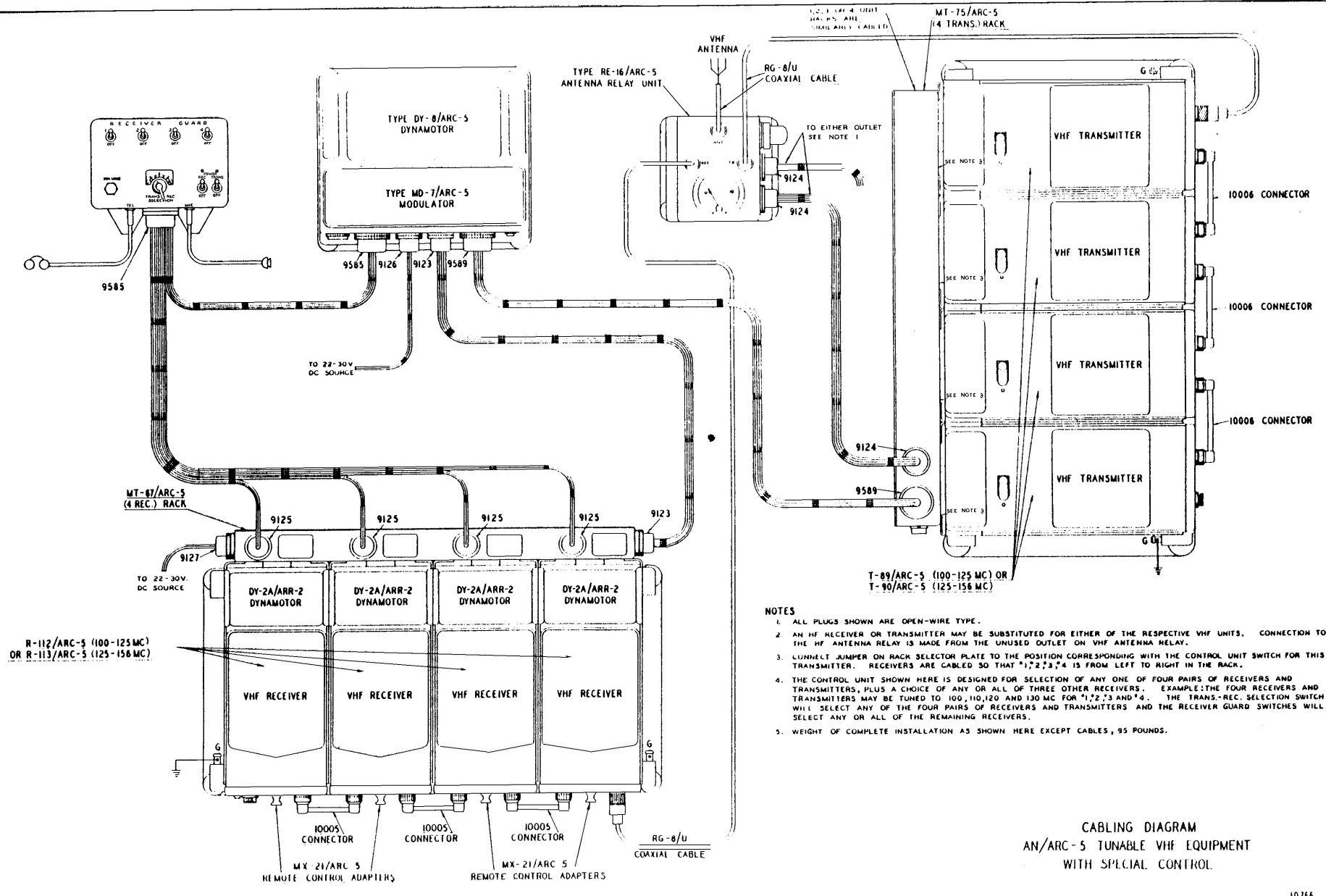
1. ALL FOUR RECEIVERS MAY BE MONITORED BY EITHER OF THE FOLLOWING METHODS:
 - (a) ALL ON A SINGLE HEADSET,
 - (b) THEY MAY BE SPLIT INTO ANY TWO COMBINATIONS BY MEANS OF THE A TEL-B TEL SWITCHES AND HEADSET CONNECTIONS TO A AND B JACKS,
 - (c) THEY MAY BE CONNECTED INDIVIDUALLY TO HEADSETS OR SPEAKERS THROUGH TERMINAL 2 IN THE RACK RECEPTACLE BEHIND EACH RECEIVER.
2. TO OPERATE ON 24 VOLT D-C SOURCE, REPLACE ALL POWER RACKS WITH DY-2A/AHR 2 DYNAMOTORS, AND REPLACE THE A-C CONNECTOR TO THE RACK WITH A CABLE CONNECTED TO THE 24 VOLT D-C SOURCE.

CABLING DIAGRAM OF FOUR TUNABLE VHF RECEIVERS FOR SIMULTANEOUS OPERATION FROM A SINGLE ANTENNA AND A 60 CYCLE 115 VOLT A-C SOURCE.



1, 2, 3, 4, 12, 13, 14, 15, 16, 17, 18, 19, 20, 21, 22, 23, 24, 25, 26, 27, 28, 29, 30, 31, 32, 33, 34, 35, 36, 37, 38, 39, 40, 41, 42, 43, 44, 45, 46, 47, 48, 49, 50, 51, 52, 53, 54, 55, 56, 57, 58, 59, 60, 61, 62, 63, 64, 65, 66, 67, 68, 69, 70, 71, 72, 73, 74, 75, 76, 77, 78, 79, 80, 81, 82, 83, 84, 85, 86, 87, 88, 89, 90, 91, 92, 93, 94, 95, 96, 97, 98, 99, 100, 101, 102, 103, 104, 105, 106, 107, 108, 109, 110, 111, 112, 113, 114, 115, 116, 117, 118, 119, 120, 121, 122, 123, 124, 125, 126, 127, 128, 129, 130, 131, 132, 133, 134, 135, 136, 137, 138, 139, 140, 141, 142, 143, 144, 145, 146, 147, 148, 149, 150, 151, 152, 153, 154, 155, 156, 157, 158, 159, 160, 161, 162, 163, 164, 165, 166, 167, 168, 169, 170, 171, 172, 173, 174, 175, 176, 177, 178, 179, 180, 181, 182, 183, 184, 185, 186, 187, 188, 189, 190, 191, 192, 193, 194, 195, 196, 197, 198, 199, 200, 201, 202, 203, 204, 205, 206, 207, 208, 209, 210, 211, 212, 213, 214, 215, 216, 217, 218, 219, 220, 221, 222, 223, 224, 225, 226, 227, 228, 229, 230, 231, 232, 233, 234, 235, 236, 237, 238, 239, 240, 241, 242, 243, 244, 245, 246, 247, 248, 249, 250, 251, 252, 253, 254, 255, 256, 257, 258, 259, 260, 261, 262, 263, 264, 265, 266, 267, 268, 269, 270, 271, 272, 273, 274, 275, 276, 277, 278, 279, 280, 281, 282, 283, 284, 285, 286, 287, 288, 289, 290, 291, 292, 293, 294, 295, 296, 297, 298, 299, 300, 301, 302, 303, 304, 305, 306, 307, 308, 309, 310, 311, 312, 313, 314, 315, 316, 317, 318, 319, 320, 321, 322, 323, 324, 325, 326, 327, 328, 329, 330, 331, 332, 333, 334, 335, 336, 337, 338, 339, 340, 341, 342, 343, 344, 345, 346, 347, 348, 349, 350, 351, 352, 353, 354, 355, 356, 357, 358, 359, 360, 361, 362, 363, 364, 365, 366, 367, 368, 369, 370, 371, 372, 373, 374, 375, 376, 377, 378, 379, 380, 381, 382, 383, 384, 385, 386, 387, 388, 389, 390, 391, 392, 393, 394, 395, 396, 397, 398, 399, 400, 401, 402, 403, 404, 405, 406, 407, 408, 409, 410, 411, 412, 413, 414, 415, 416, 417, 418, 419, 420, 421, 422, 423, 424, 425, 426, 427, 428, 429, 430, 431, 432, 433, 434, 435, 436, 437, 438, 439, 440, 441, 442, 443, 444, 445, 446, 447, 448, 449, 450, 451, 452, 453, 454, 455, 456, 457, 458, 459, 460, 461, 462, 463, 464, 465, 466, 467, 468, 469, 470, 471, 472, 473, 474, 475, 476, 477, 478, 479, 480, 481, 482, 483, 484, 485, 486, 487, 488, 489, 490, 491, 492, 493, 494, 495, 496, 497, 498, 499, 500, 501, 502, 503, 504, 505, 506, 507, 508, 509, 510, 511, 512, 513, 514, 515, 516, 517, 518, 519, 520, 521, 522, 523, 524, 525, 526, 527, 528, 529, 530, 531, 532, 533, 534, 535, 536, 537, 538, 539, 540, 541, 542, 543, 544, 545, 546, 547, 548, 549, 550, 551, 552, 553, 554, 555, 556, 557, 558, 559, 560, 561, 562, 563, 564, 565, 566, 567, 568, 569, 570, 571, 572, 573, 574, 575, 576, 577, 578, 579, 580, 581, 582, 583, 584, 585, 586, 587, 588, 589, 590, 591, 592, 593, 594, 595, 596, 597, 598, 599, 600, 601, 602, 603, 604, 605, 606, 607, 608, 609, 610, 611, 612, 613, 614, 615, 616, 617, 618, 619, 620, 621, 622, 623, 624, 625, 626, 627, 628, 629, 630, 631, 632, 633, 634, 635, 636, 637, 638, 639, 640, 641, 642, 643, 644, 645, 646, 647, 648, 649, 650, 651, 652, 653, 654, 655, 656, 657, 658, 659, 660, 661, 662, 663, 664, 665, 666, 667, 668, 669, 670, 671, 672, 673, 674, 675, 676, 677, 678, 679, 680, 681, 682, 683, 684, 685, 686, 687, 688, 689, 690, 691, 692, 693, 694, 695, 696, 697, 698, 699, 700, 701, 702, 703, 704, 705, 706, 707, 708, 709, 710, 711, 712, 713, 714, 715, 716, 717, 718, 719, 720, 721, 722, 723, 724, 725, 726, 727, 728, 729, 730, 731, 732, 733, 734, 735, 736, 737, 738, 739, 740, 741, 742, 743, 744, 745, 746, 747, 748, 749, 750, 751, 752, 753, 754, 755, 756, 757, 758, 759, 760, 761, 762, 763, 764, 765, 766, 767, 768, 769, 770, 771, 772, 773, 774, 775, 776, 777, 778, 779, 780, 781, 782, 783, 784, 785, 786, 787, 788, 789, 790, 791, 792, 793, 794, 795, 796, 797, 798, 799, 800, 801, 802, 803, 804, 805, 806, 807, 808, 809, 810, 811, 812, 813, 814, 815, 816, 817, 818, 819, 820, 821, 822, 823, 824, 825, 826, 827, 828, 829, 830, 831, 832, 833, 834, 835, 836, 837, 838, 839, 840, 841, 842, 843, 844, 845, 846, 847, 848, 849, 850, 851, 852, 853, 854, 855, 856, 857, 858, 859, 860, 861, 862, 863, 864, 865, 866, 867, 868, 869, 870, 871, 872, 873, 874, 875, 876, 877, 878, 879, 880, 881, 882, 883, 884, 885, 886, 887, 888, 889, 890, 891, 892, 893, 894, 895, 896, 897, 898, 899, 900, 901, 902, 903, 904, 905, 906, 907, 908, 909, 910, 911, 912, 913, 914, 915, 916, 917, 918, 919, 920, 921, 922, 923, 924, 925, 926, 927, 928, 929, 930, 931, 932, 933, 934, 935, 936, 937, 938, 939, 940, 941, 942, 943, 944, 945, 946, 947, 948, 949, 950, 951, 952, 953, 954, 955, 956, 957, 958, 959, 960, 961, 962, 963, 964, 965, 966, 967, 968, 969, 970, 971, 972, 973, 974, 975, 976, 977, 978, 979, 980, 981, 982, 983, 984, 985, 986, 987, 988, 989, 990, 991, 992, 993, 994, 995, 996, 997, 998, 999, 1000.

MT-75/ARC-5
(4 TRANS.) RACK



R-112/ARC-5 (100-125 MC)
OR R-113/ARC-5 (125-156 MC)

MT-87/ARC-5
(4 REC.) RACK

TO 22-30V
DC SOURCE

TO 22-30V
DC SOURCE

TYPE RE-16/ARC-5
ANTENNA RELAY UNIT

TYPE DY-8/ARC-5
DYNAMOTOR

TYPE MD-7/ARC-5
MODULATOR

MX-21/ARC-5
REMOTE CONTROL ADAPTERS

MX-21/ARC-5
REMOTE CONTROL ADAPTERS

RG-8/U
COAXIAL CABLE

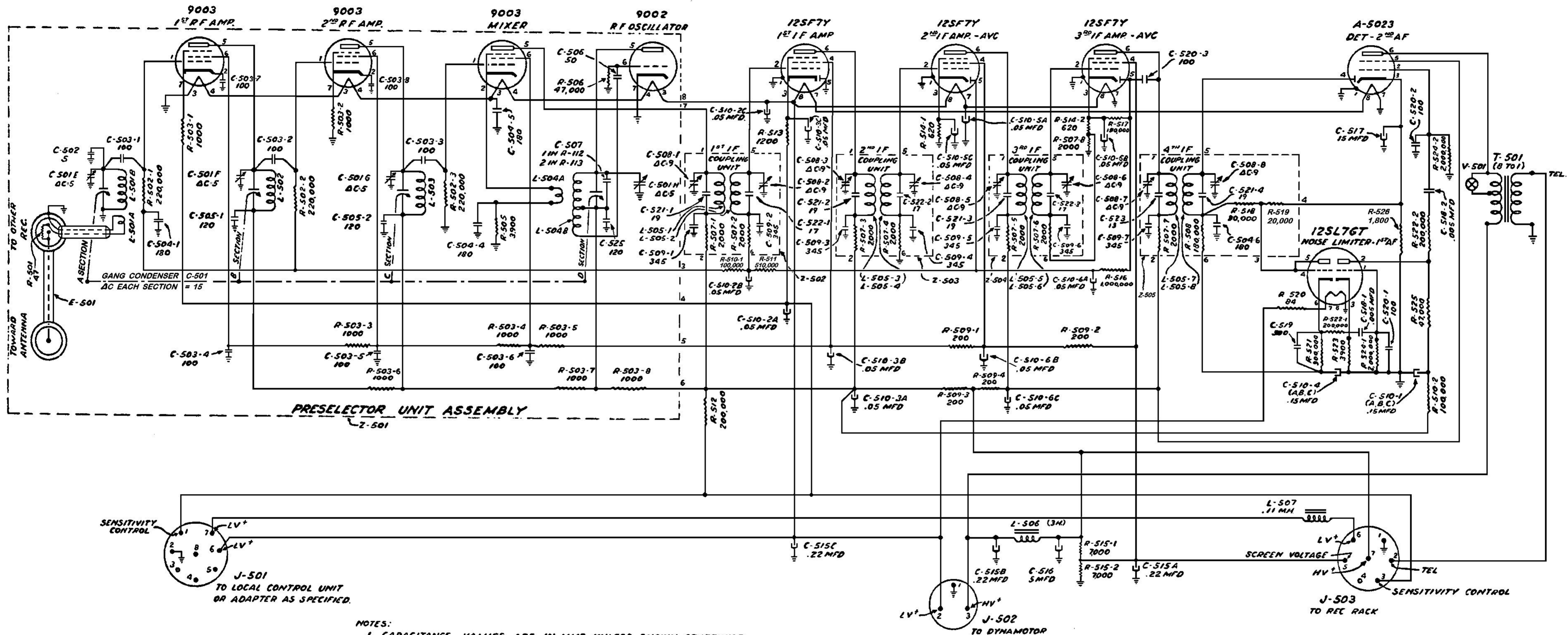
T-89/ARC-5 (100-125 MC) OR
T-90/ARC-5 (125-156 MC)

NOTES

1. ALL PLUGS SHOWN ARE OPEN-WIRE TYPE.
2. AN HF RECEIVER OR TRANSMITTER MAY BE SUBSTITUTED FOR EITHER OF THE RESPECTIVE VHF UNITS. CONNECTION TO THE HF ANTENNA RELAY IS MADE FROM THE UNUSED OUTLET ON VHF ANTENNA RELAY.
3. CONNECT JUMPER ON RACK SELECTOR PLATE TO THE POSITION CORRESPONDING WITH THE CONTROL UNIT SWITCH FOR THIS TRANSMITTER. RECEIVERS ARE CABLED SO THAT "1,2,3,4" IS FROM LEFT TO RIGHT IN THE RACK.
4. THE CONTROL UNIT SHOWN HERE IS DESIGNED FOR SELECTION OF ANY ONE OF FOUR PAIRS OF RECEIVERS AND TRANSMITTERS, PLUS A CHOICE OF ANY OR ALL OF THREE OTHER RECEIVERS. EXAMPLE: THE FOUR RECEIVERS AND TRANSMITTERS MAY BE TUNED TO 100, 110, 120 AND 130 MC FOR "1,2,3 AND 4". THE TRANS-REC. SELECTION SWITCH WILL SELECT ANY OF THE FOUR PAIRS OF RECEIVERS AND TRANSMITTERS AND THE RECEIVER GUARD SWITCHES WILL SELECT ANY OR ALL OF THE REMAINING RECEIVERS.
5. WEIGHT OF COMPLETE INSTALLATION AS SHOWN HERE EXCEPT CABLES, 95 POUNDS.

CABLING DIAGRAM
AN/ARC-5 TUNABLE VHF EQUIPMENT
WITH SPECIAL CONTROL.

SCHEMATIC CIRCUIT DIAGRAM
R-112/ARC-5 AND R-113/ARC-5 RADIO RECEIVERS
 SERIAL #8 TO #25 INCLUSIVE



- NOTES:**
1. CAPACITANCE VALUES ARE IN MMF UNLESS SHOWN OTHERWISE.
 2. ELECTROLYTIC AND OIL-PAPER CAPACITORS ARE SHOWN AS Ψ , ALL OTHERS AS --- .
 3. RECEPTACLES ARE SHOWN AS SEEN FROM THE OUTSIDE.
 4. RESISTANCE VALUES ARE IN OHMS.
 5. R-112/ARC-5 (100-125 MC) DIFFERS FROM R-113/ARC-5 (125-156 MC) IN THE VALUES OF L-501 TO L-504 INCLUSIVE AND IN THE VALUE OF C-507.
 6. THE IF IS 15 MC.

FIGURE 3
R-112/ARC-5 & R-113/ARC-5 RADIO RECEIVERS
SCHEMATIC CIRCUIT DIAGRAM

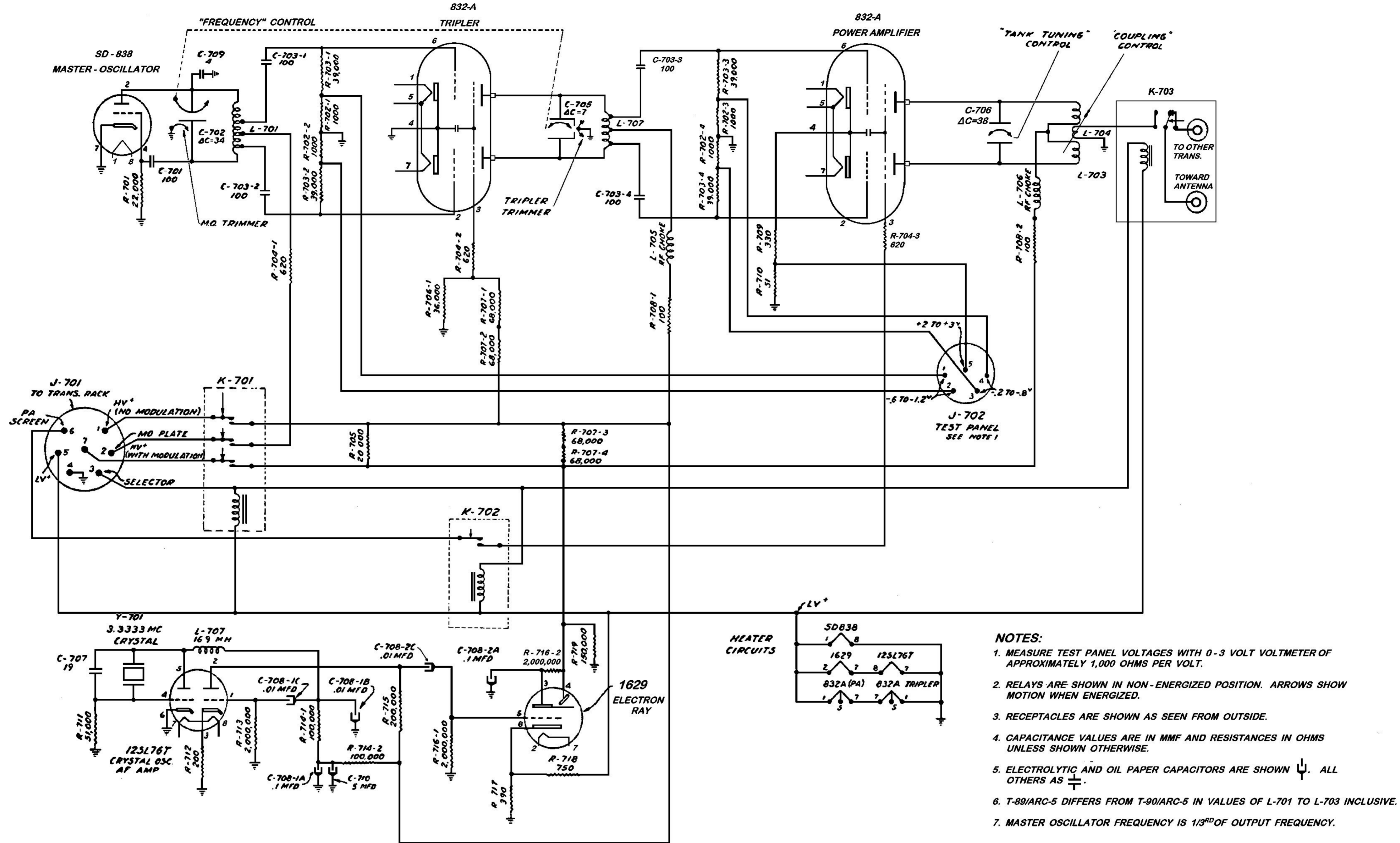


FIGURE 2
T-89/ARC-5 & T-90/ARC-5 RADIO TRANSMITTERS
SCHEMATIC CIRCUIT DIAGRAM

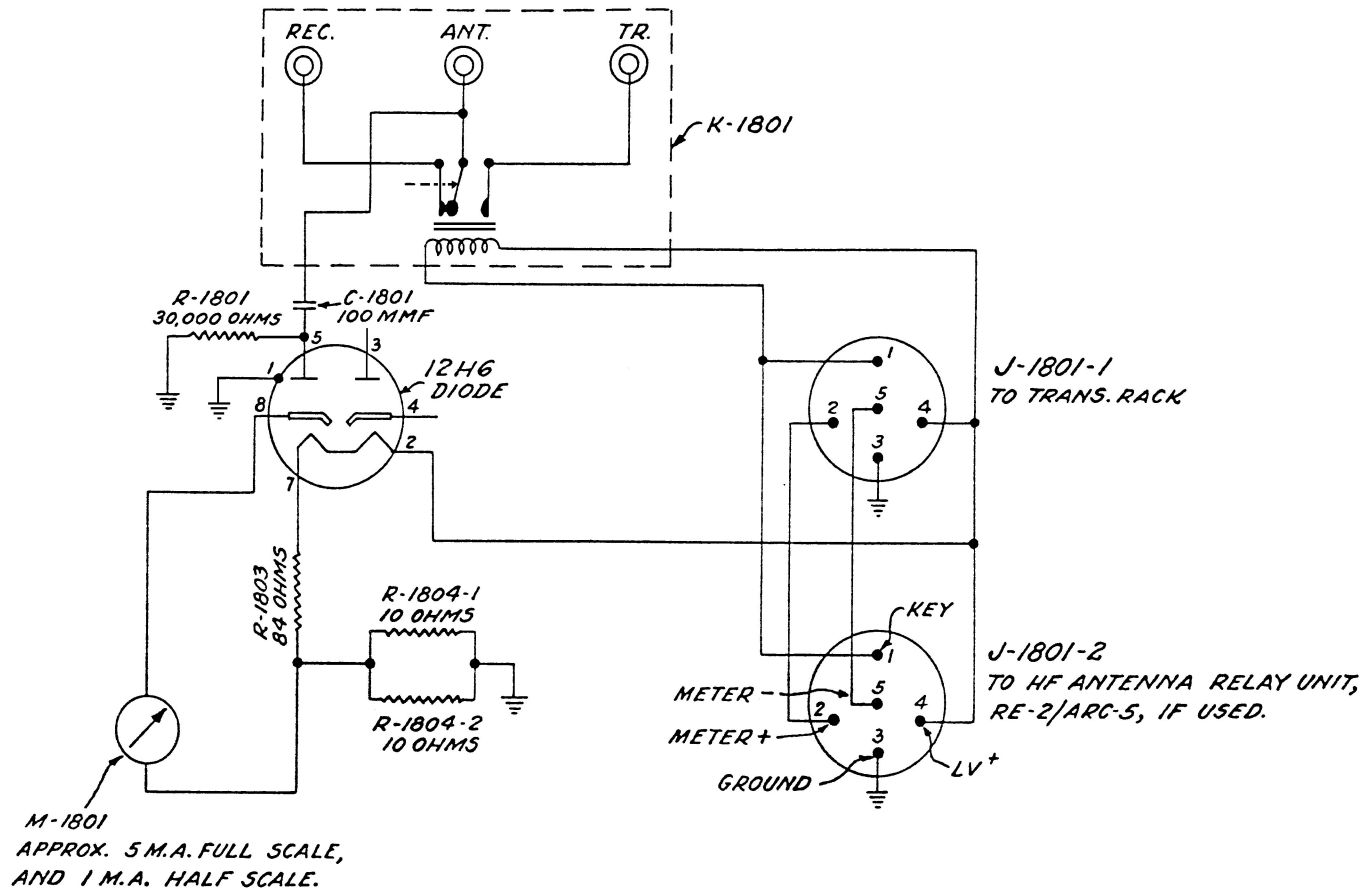


FIGURE 8
 RE-16/ARC-5 ANTENNA RELAY UNIT
 SCHEMATIC CIRCUIT DIAGRAM