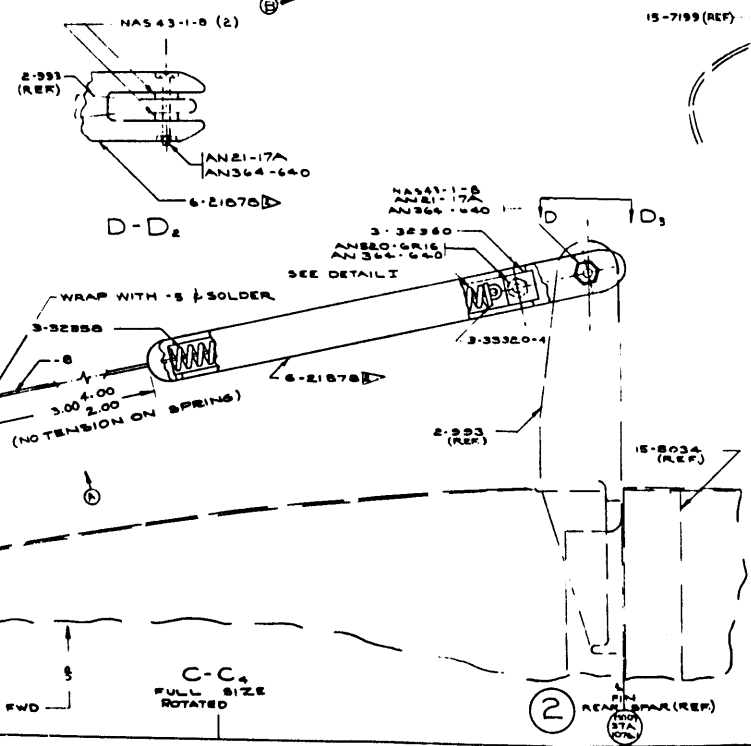
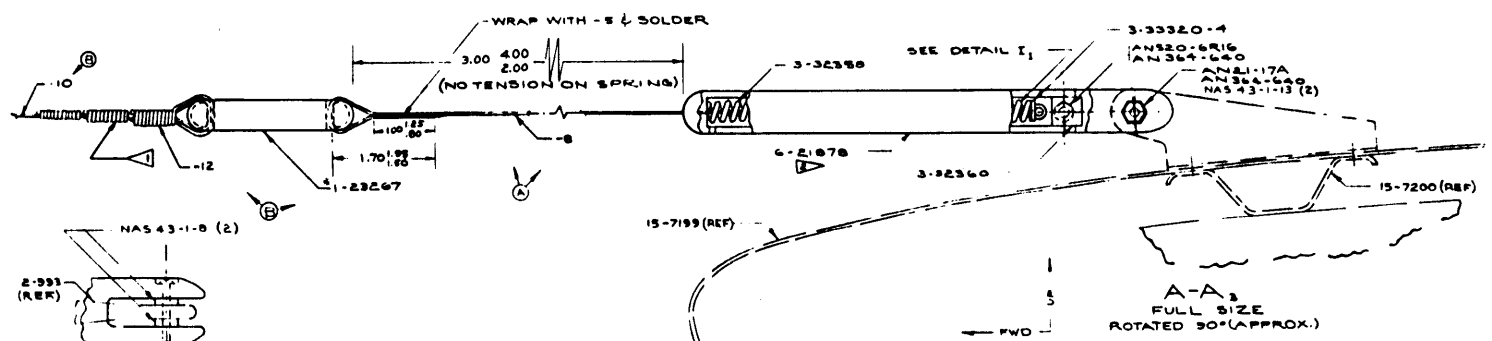
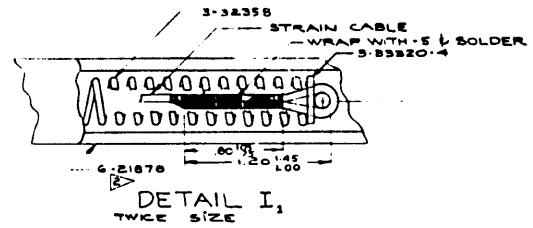
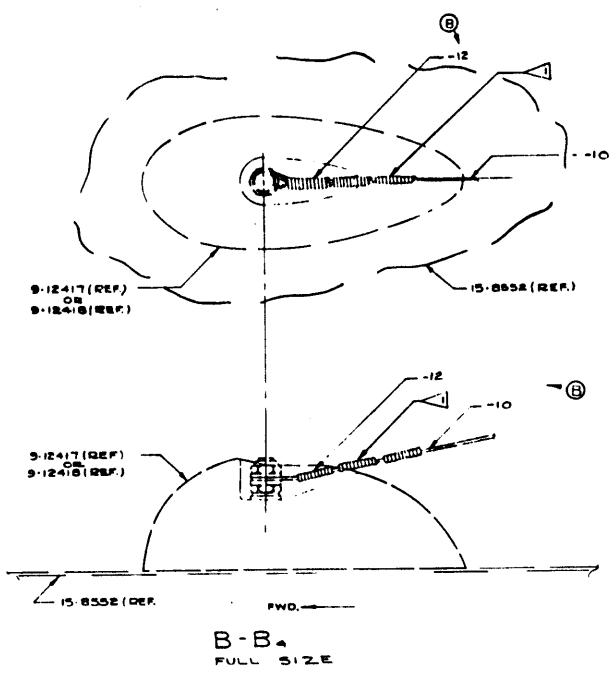


AIRPLANE SERIAL NUMBERS				PART NUMBER				MODEL			
BELL	MARTIN	REBAC	WIBAC	SEBAC	MODEL	NO.	NO.	NO.	NO.	NO.	NO.
		44-62750 TO 44-62328 INCL.	NONE		15-20824	5-23	MS	18-0045	1		

* FURNISHED BY GOVERNMENT

- ▽ SPLICE PER TO. 08-8-64, FIG 3 OR 4 (AS APPLICABLE)
- ▽ INSTALL TENSION HOUSING UNIT WITH DRAIN HOLES DOWN
- ▽ COR RES STL 7 X 7 CABLE SPEC AN-RR-C-46

- ▽ .020 DIA STL WIRE SPEC AN-QQ-W-455
- ▽ STEEL, COPPER CLAD, TYPE W-106-A TO BE MANUFACTURED PER SPEC 71-526-C
- INSTALL ANTENNA AT TENSION OF 15 LB APPROX.
- ALTERNATE METHOD: COMPRESS SPRING BEYOND HOLE NEAR CENTER OF TENSION UNIT & INSERT PIN; RELAX SPRING ALLOWING SPRING TO COMPRESS AGAINST PIN. AT INST. CORRECT TENSION WILL BE ATTAINED WHEN PIN DROPS FROM HOLE.



QTY	REF	PART NUMBER	NAME OF PART	ZONE	SIZE-BASE	MATERIAL	HT	CG
-9	2	# -12	WIRE - ANTENNA		.039 DIA 12 LONG			B
-9	2	NAS43-1-8	SPACER-SCREW/BOLT		NO. 6	STL		A
-9	2	NAS43-1-13	SPACER-SCREW/BOLT		NO. 6	STL		A
-9	1	ANS364-640	NUT-SELF LCKG. (THIN)		NO. 6-40	STL.		A
-11	1	ANS364-640	NUT-SELF LOCKING (THIN)		NO. 40	STL.		A
-9	1	ANS21-17A	BOLT-CLEVIS - NO. 6-40		NO. 6-40 X 1 1/2	STL		A
-9	1	T-23267	INSULATOR-STRAIN					B
-11	1	ANS20-6R16	SCREW-R HD MACH		NO. 6-40 X 1	STL		A
-11	1	3-33320-4	TERMINAL ASSY-ANT ATTN					A
-11	1	3-32360	PLUG-HOUSING					A
-11	1	6-21878	HOUSING-TENSION UNIT					A
-11	1	3-32358	SPRING-COMPRESSION					A
-9	2	# -5	WIRE					A
-11	1	# -8	CABLE		1/4 DIA X LONG			A
-9	1	# -11	TENSION ASSY					A
-9	1	# -12	WIRE-ANTENNA		.039 DIA 12 LONG			B
-9	1	# -10	WIRE-ANTENNA		.039 DIA 34 LONG			B
	2	# -9	ANTENNA ASSY					A

USED TO INSTALL	USED ON	QTY	PART NUMBER	NAME OF PART	ZONE	SIZE-BASE	MATERIAL	HT	CG

**ANTENNA INST
FIXED WIRE**

ISSUE DATE: 15-20824

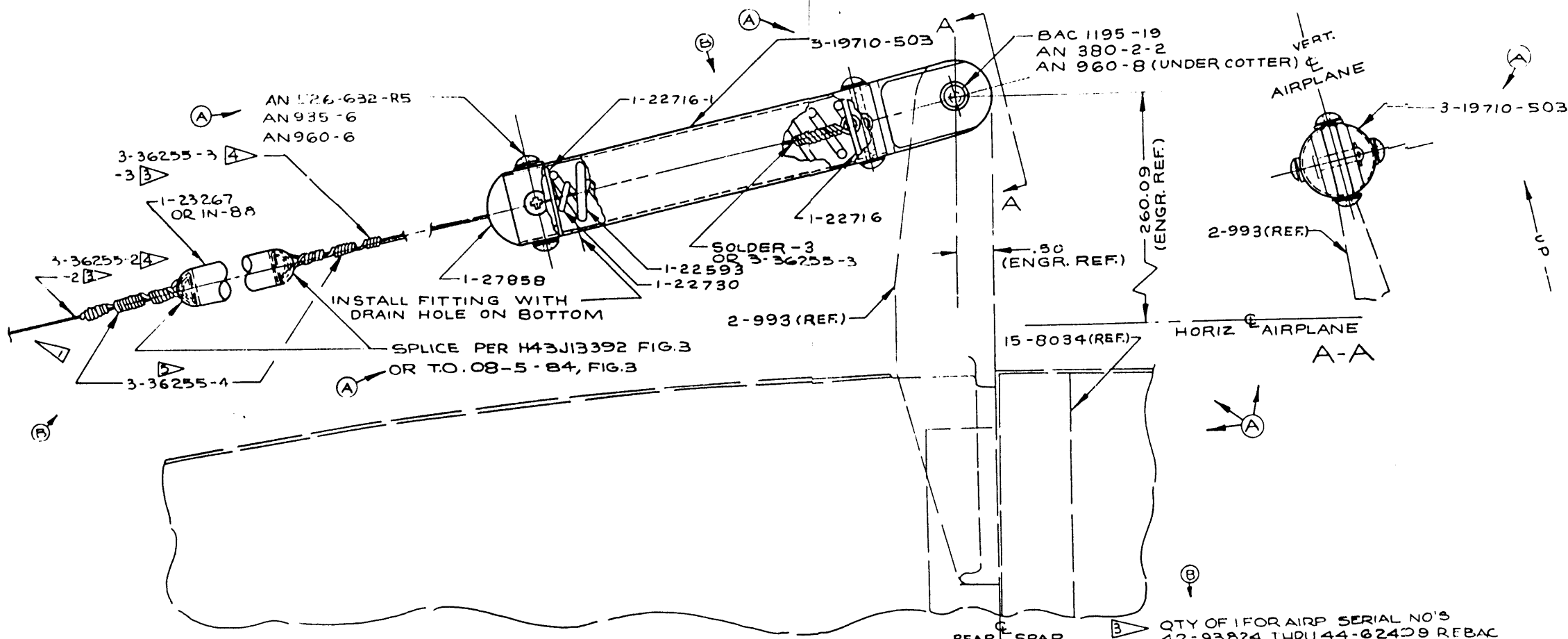
BOEING AIRCRAFT COMPANY, SEATTLE, WASH

MARTIN TRACING

AIRPLANE SERIAL NUMBERS
 MARTIN BELL REBAC WIBAC SEBAC
 ALL
 42-93824 TO 44-62409 INCL

AIRP USED ON QTY. FINISH
 PART NUMBER MODEL SEC. DWG. NO. AIRR PER AIRR SPEC.
 6-13496 B-29 42 15-9862 1
 6-13496 B-29 46 15-9862 1

42-
44-



L.H. SIDE VIEW

QTY OF 1 FOR AIRP SERIAL NO'S
 42-93824 THRU 44-62409 REBAC
 41-36954 THRU 45-21941 WIBAC

DO NOT INCLUDE ANTENNA WIRE
 FOR SPARES

SEE 15-9862 FOR
 INST. AT FUSELAGE

* FURNISHED BY GOVT.

QTY OF 1 FOR AIRPLANE SERIAL NO'S
 44-62410 & ON REBAC
 45-21943 & ON WIBAC

AIRPLANE SERIAL NO'S

QTY	PART NUMBER	NAME OF PART	SIZE	MATERIAL	FINISH
1	1-23267	INSULATOR STRAIN			
1	IN-88	INSULATOR STRAIN			
1	3-36255-3	WIRE ANTENNA			
1	* 3	WIRE ANTENNA			
1	AN960-8	WASHER, PLAIN			
1	AN380-2-2	PIN, COTTER			
1	BAC1195-19	PIN, FLAT HD.			
4	AN935-6	WASHER, LOCK			
4	AN960-6	WASHER, PLAIN			
4	AN526-632-R5	SCREW, TRUSS HD.			
1	3-19710-503	FITTING, ANT. ATT.			
1	1-22716-1	PLATE, ANT. ATT.			
1	1-22716	PLATE, ANT. ATT.			
1	1-22730	SPRING COMPR.			
1	1-27858	CAP, ANT. ATT.			
1	1-22593	SPRING COMPR.			
1	3-36255-4	WIRE ANTENNA			
1	3-36255-2	WIRE ANTENNA			
1	* 2	WIRE, ANTENNA			
1	1	ANTENNA ASSY.			

.039 DIA. STEEL, COPPER
 324 L. APPROX. CLAD, TYPE 1106A

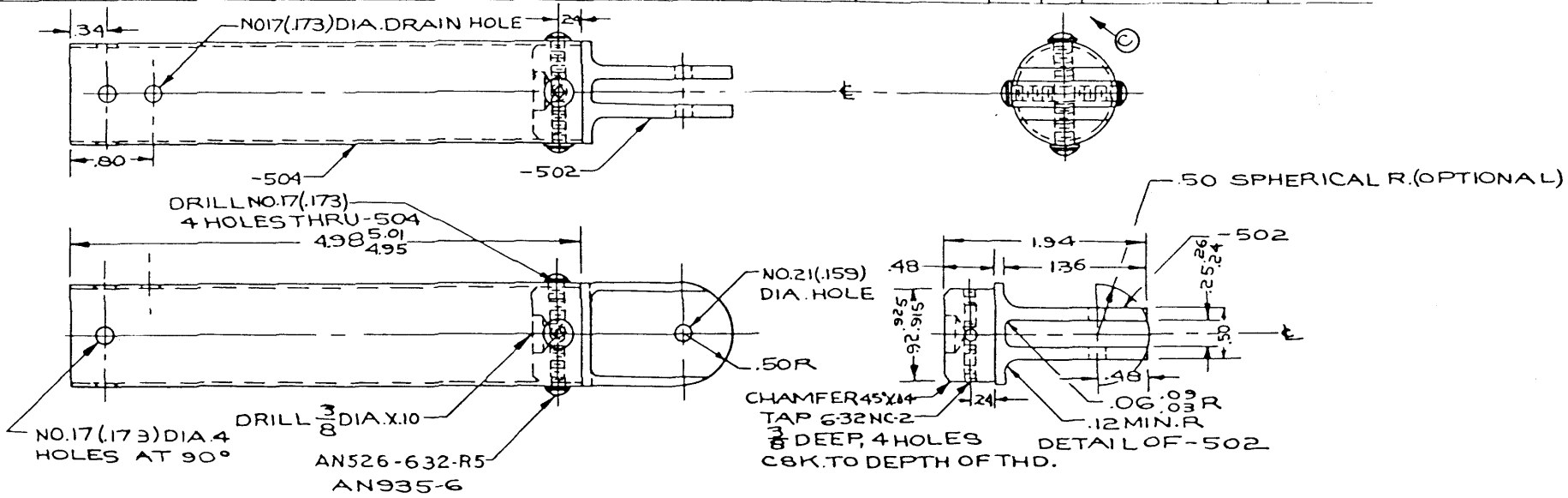
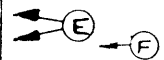
USED TO INSTALL	USED ON	QTY.	PART NUMBER	NAME OF PART	ZONE CODE	SIZE-BASE SECTION NO.	MATERIAL	HT	CO.
DATE	CHANGE	BY	SCALE	FULL SIZE	ALL DIMENSIONS IN INCHES TOLERANCES: .03 EXC AS NOTED ANGULAR TOLERANCES: EXCEPT AS NOTED				
REVISION	DESCRIPTION	DATE	BY	BY					
1	REVISION	1-15-42	CHICKEN	J. P. BAYAN					
2	REVISION	1-15-42	CHICKEN	J. P. BAYAN					
3	REVISION	1-15-42	CHICKEN	J. P. BAYAN					
4	REVISION	1-15-42	CHICKEN	J. P. BAYAN					
5	REVISION	1-15-42	CHICKEN	J. P. BAYAN					
6	REVISION	1-15-42	CHICKEN	J. P. BAYAN					
7	REVISION	1-15-42	CHICKEN	J. P. BAYAN					
8	REVISION	1-15-42	CHICKEN	J. P. BAYAN					
9	REVISION	1-15-42	CHICKEN	J. P. BAYAN					
10	REVISION	1-15-42	CHICKEN	J. P. BAYAN					
HEAT TREATMENT SPECIFICATION					LOCATION	ISSUE DATE	ISSUE NO.		
STEEL					AN-00-H-201	VERT. FIN			

ATT. INST.
LIAISON ANT

R 13496



AIRPLANE SERIAL NUMBERS					PART NUMBER	MODEL	AIRP SEC NO	USED ON DWG. NUMBER	QTY. PER AIRP	FINISH SPEC.
BELL	MARTIN	RE.BAC	WIBAC	SEBAC						
		42-63824 TO 44-62289 INCL	—	—	3-19710-503	B-29	46	6-13496	1	2
		—	ALL	—	3-19710-503	B-29	42	6-13496	1	2



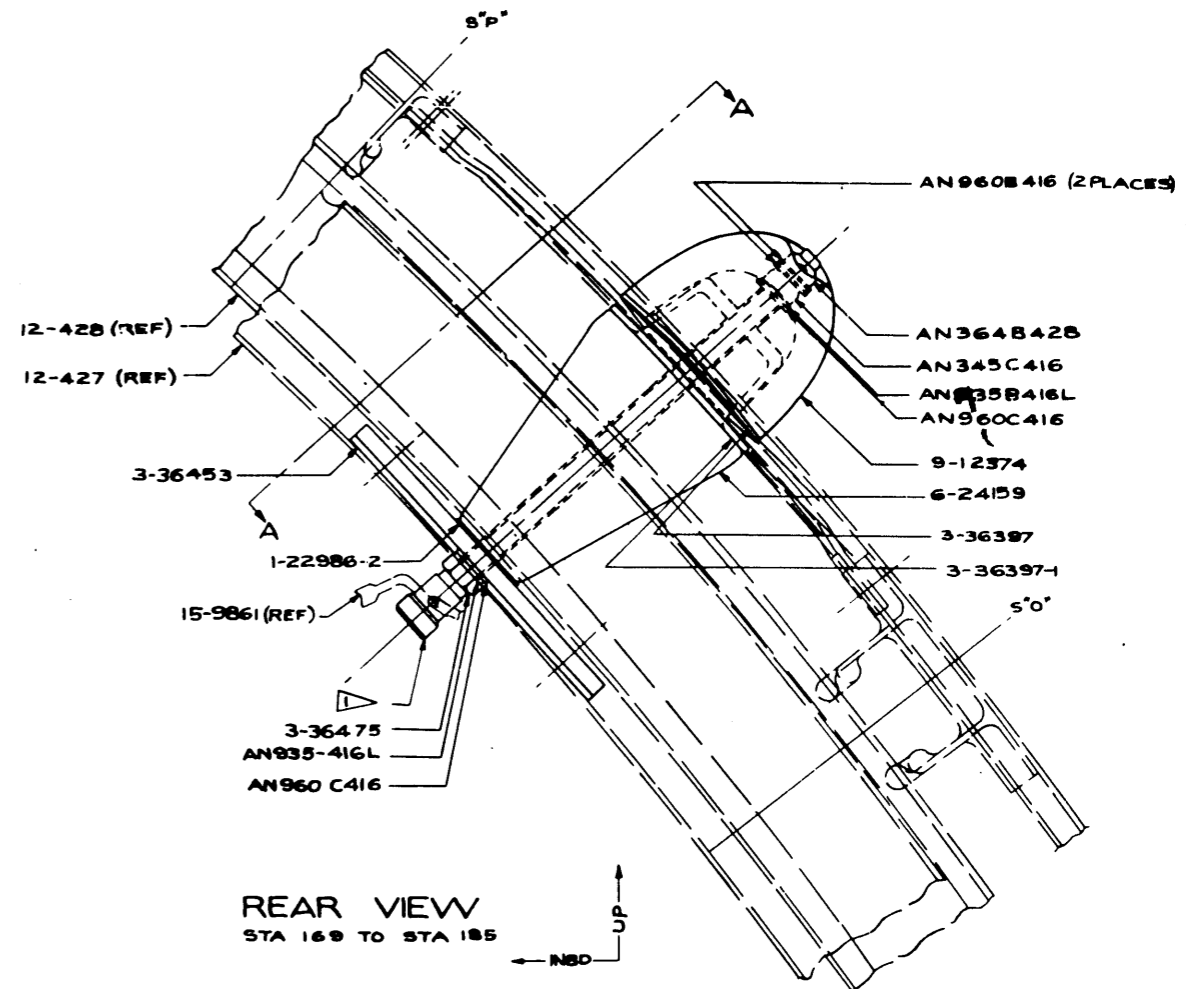
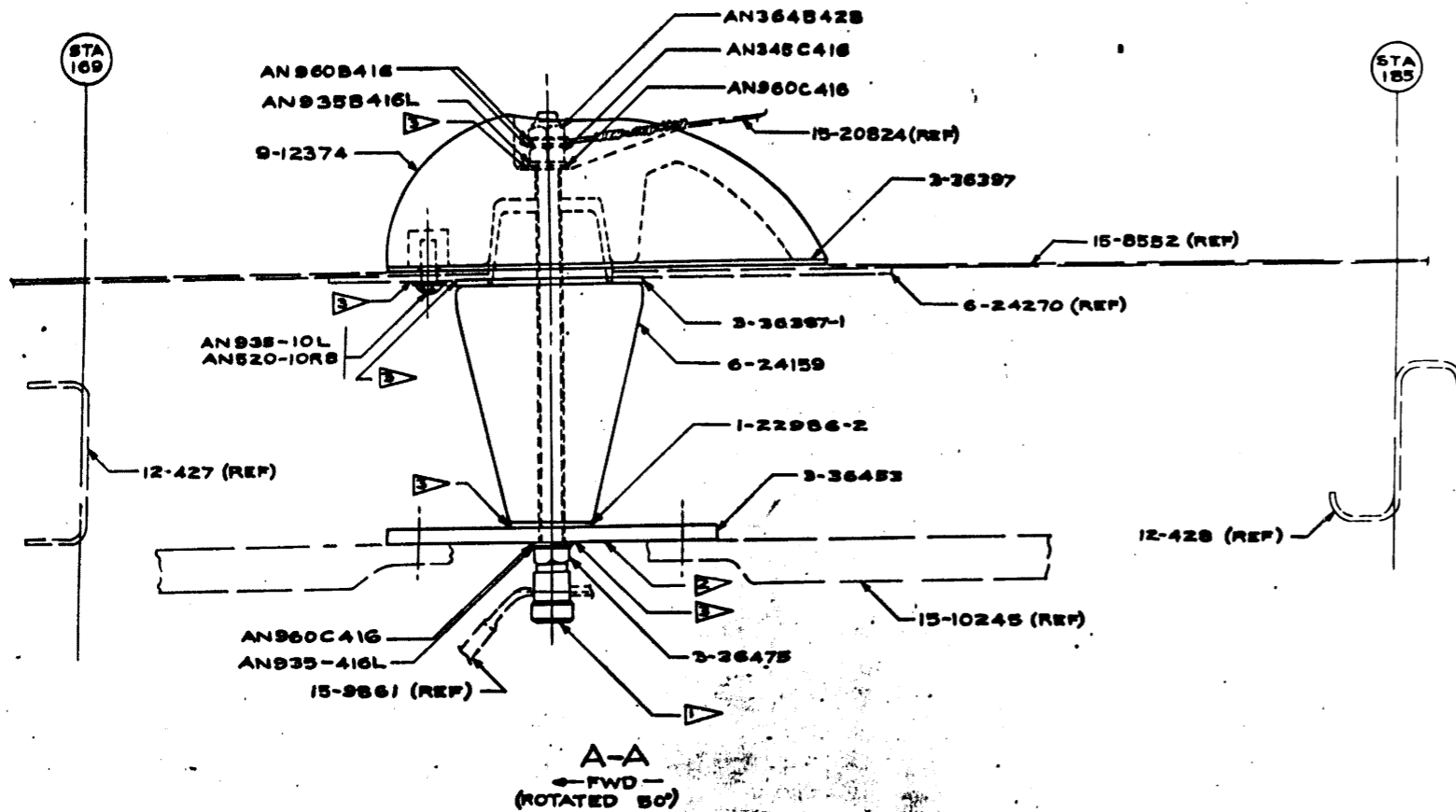
USED TO INSTALL	USED ON	QTY.	PART NUMBER	NAME OF PART	ZONE CODE	SIZE - GAGE SECTION NO.	MATERIAL	H.T.	CO. LET.
			503	4 AN935-G	WASHER - LOCK		NO.6	STL	
			503	4 AN326-632-R5	SCREW, TRUSS HD		6-32 X 5/16	STL	D
			503	1 -502	FITTING		1 DIA. X 2	24 ST.	
			503	1 -504	TUBE		.035 X 10.0		C
				-503	FITTING ASSY.				

> BF3-15 & 68 OR BF3-38 & 68 EXCEPT 25 MATL.

> 24 ST TUBE SPEC. 10235 OPTIONAL MATL. 2 S 1/2 H SPEC. WW-T-783

24ST BAR SPEC. QQ-A-354

MACHINE FINISHES SEE BAC 2040	LETR.	C.O. NUMBER	DATE	CHANGE	SCALE FULL SIZE	ALL DIMENSIONS IN INCHES TOLERANCES: .015 EXCEPT AS NOTED ANGULAR TOLERANCES: 2° EXCEPT AS NOTED
		154057	6-15-43	CHANGE CODE	DRAWN BY J. J. ALLANI	
BEND RADIUS PER BAC 2041 UNLESS OTHERWISE NOTED	MATERIAL		5-31-44	CHG. PART NO.	CHECKED BY NELSON	FITTING ASSY. ANTENNA ATT.
			5-25-45	TAB BLK	DESIGN CK	
			5-28-46	TAB BLK	GROUP ENGR	
					APPROVED WILLIAMS	1-6-43
					TRACED D. SMITH	2-18-44
					CHECKED BELDIN	3-1-44
					APPROVED B. H. HUNTER	3-2-44
					STEEL	H.T. SPEC. AN-QQ-H-201
					AL ALLOY	AN-QQ-H-106
BOEING AIRCRAFT COMPANY, SEATTLE, WASH.						LOCATION NOTED
						ISSUE DATE
						ISSUE NO. 3-19710



REAR VIEW
STA 169 TO STA 185

- ▽ SEAL PER BAC 5000, TYPE VII
- ▽ INSTALL PLATE FOR READING CONVENIENTLY.
- ▽ NO. 63-M SPRING TERM POST.
HUGH H. EBY, INC., PHILADELPHIA, PA.

QTY.	PART NUMBER	NAME OF PART	ZONE CODE	SIZE-GAGE SECTION NO.	MATERIAL	HT	CO
1	AN935B416L	WASHER-LOCK	1/2	BOLT	BRONZE		
1	BAC 5000 TYPE VII	PROCESS SPECIFICATION	3				
1	AN935-10L	WASHER-MEDIUM SPRING LOCK		NO.10 BOLT	STL		
1	3-36453	PLATE-LINING SUPT					
2	AN960B416	WASHER-PLAIN	1/2	BOLT	BRASS		
1	1-22986-2	WASHER-RUBBER					
1	AN345C416	NUT-LIGHT HEXAGONAL	1/2	-28	COR RES STL		
1	AN935-416L	WASHER-LOCK	1/2	BOLT	STL		
2	AN960C416	WASHER-PLAIN	1/2	BOLT	COR RES STL		
1	AN364B42B	NUT-SLF LOCKING	1/2	-28	BRASS		
1	AN520-10R8	SCREW-RHD MACH		10-32 X 1/2	STL		
1		TERM POST-SPRING					
1	6-24159	INSULATOR LEAD-IN					
1	9-12374	INSULATOR STREAMLINED					
1	3-36475	BOLT-ANT LEAD-IN					
1	3-36397-1	GASKET-INSULATOR					
1	3-36397	GASKET-INSULATOR					

MARTIN	BELL	REBAC	WIBAC	SEBAC	PART NUMBER	MODEL	APP SEC NO.	USED ON DWG NO.	QTY PER AIRP	FINISH SPEC	PART NAME
					9-12418	B-29	41	15-9861	1		

USED TO INSTALL: []
 USED ON: []
 QTY.: []
 PART NUMBER: []
 NAME OF PART: []
 ZONE CODE: []
 SIZE-GAGE SECTION NO.: []
 MATERIAL: []
 HT: []
 CO: []

DATE: []
 CHANGE: []
 SCALE: []
 DRAWN BY: []
 CHECKED BY: []
 APPROVED BY: []

ALL DIMENSIONS IN INCHES TOLERANCES: ± .005 EXC AS NOTED
 ANGULAR TOLERANCES: ± .5° EXCEPT AS NOTED

INSULATOR INST LIAISON ANT

HEAT TREATMENT SPECIFICATION: STEEL AN-QQ-H-201
 ALUM ALLOY AN-QQ-H-186

ISSUE DATE: []
 ISSUE NO.: []

BOEING AIRCRAFT COMPANY, SEATTLE, WASH.
 B-29 CHG 618

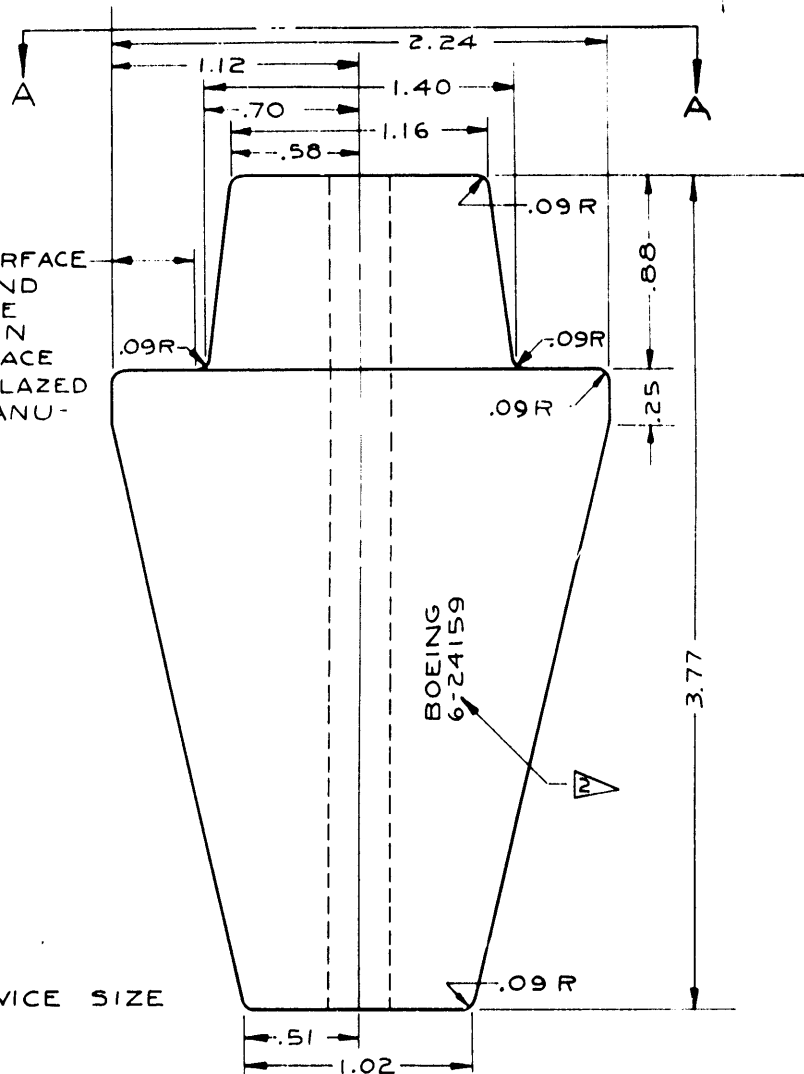
9-12418

9-12418

AIRPLANE SERIAL NUMBERS
 BELL MARTIN REBAC WIBAC

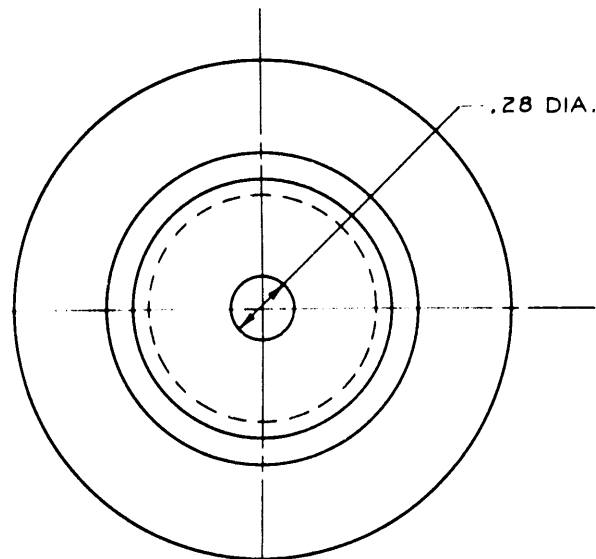
14-62890 TO
 14-62899 INCL
 14-62900 INCL

SEBAC	PART NUMBER	MODEL	AIRP SEC NO.	USED ON DWG NUMBER	QTY PER AIRP	FINISH SPEC
	6-24159	B-29-41		9-12418	1	---
	6-24159	B-29-41		9-12417	1	---
46-2 \$ ON	6-24159	B-50-41		15-22536	2	---
48-2 \$ ON	6-24159	B-50-41		15-23118	3	---

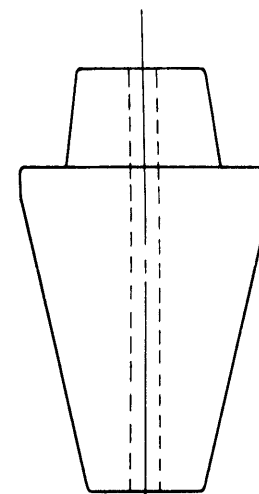


PERIPHERAL SURFACE MUST BE FLAT AND FREE OF SURFACE IRREGULARITIES IN THIS AREA. SURFACE MAY BE LEFT UNGLAZED AT OPTION OF MANUFACTURER

TWICE SIZE



A-A
 TWICE SIZE



ACTUAL SIZE

2 INSULATOR SHALL BE INDELIBLY MARKED OR STAMPED WITH THE BAC PART NO. 6-24159 AND WITH THE MANUFACTURERS NAME OR TRADEMARK

1 MATERIAL - STEATITE, PER JAN-I-10, GRADE L-4 FINISH - WHITE GLAZE ALL OVER EXCEPT AS NOTED

ACCEPTABLE SOURCES OF SUPPLY:

1. GENERAL CERAMIC & STEATITE CORP., KESBEY, N.J.
2. CENTRALAB DIV GLOBE UNION INC., MILWAUKEE, WISCONSIN
3. ISOLANTITE INC., BELLEVILLE, N.J.
4. AMERICAN LAVA CORP., CHATTANOOGA, TENNESSEE
5. VICTOR INSULATORS, INC., VICTOR, N.Y.
6. LOCKE INSULATOR CORP., BALTIMORE, MARYLAND
7. STUPAKOFF CERAMIC & MFG. CO., LATROBE, PENN
8. PACIFIC CLAY PRODUCTS CO., LOS ANGELES, CALIFORNIA

CONTROLLED INTERCHANGEABLE PART

A

T/L BJS NA 5/7

QTY	PART NUMBER	NAME OF PART	ZONE	SIZE	GAGE	MATERIAL	M. T.	C.O.
	6-24159	INSULATOR LEAD-IN						
MACHINE FINISHES SEE BAC 2040		HEAT TREATMENT SPECIFICATION	ALL DIMS IN INCHES. TOLS .03 EXC AS NOTED					
BEND RADII PER BAC 2041 EXCEPT AS OTHERWISE NOTED		STEEL AN-QQ-H-201	ANGULAR TOLERANCES: --- EXC AS NOTED					
		ALUM ALLOY AN-QQ-H-186	PART NO. OF OPP. HAND PART NONE					
		BOEING AIRCRAFT COMPANY, SEATTLE, WASH.	ISSUE DATE		ISSUE NO.			
		B-29 CHG 618			6-24159			

B 6-24159

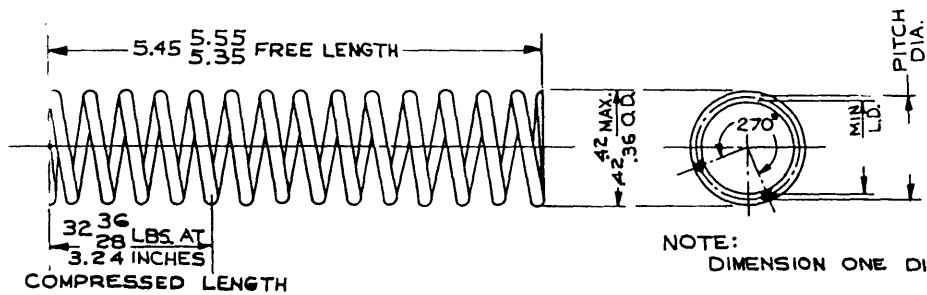
89228-C 8

AIRPLANE SERIAL NUMBERS				PART NUMBER	MODEL	AIRP. SEC. NO.	USED ON DWG. NUMBER	QTY. PER AIRP.	FINISH SPEC.
BELL	MARTIN	WIBAC	REBAC	3-32358	B-29	42 46	15-18033	1	BF3-41 or 141
		45-21743 & ON	44-61910 & ON	3-32358	B-29	42 46	15-20824	2	BF3-41 or 141
		45-21843 & ON	44-62510 & ON						

(B)

(A)

9637K75



NOTE:
DIMENSION ONE DIA. ONLY

▷ SPRING STL. (MUSIC WIRE)
PER SPEC. AN-QQ-W-441

NUMBER OF COILS, APPROX. TOTAL = 47
NUMBER OF COILS, ACTIVE = 45
ENDS CLOSED AND GROUND SQUARE.
BEARING SURFACE SHALL EXTEND OVER
NOT LESS THAN 1/4 TURN (270°)
NO PERMANENT SET SHALL RESULT
FROM THE SPECIFIED LOAD

USED TO INSTALL	USED ON	QTY.	PART NUMBER	NAME OF PART	ZONE CODE	SIZE-GAGE SECTION NO.	MATERIAL	HT	CO.
						.063	▷		
MACHINE FINISHES SEE BAC 2040 BEND RADIUS PER BAC 2041 EXCEPT AS OTHERWISE NOTED	LETR DATE	CHANGE	B-P UNIT	SCALE NO SCALE	ALL DIMENSIONS IN INCHES TOLERANCES ± .03 EXC AS NOTED ANGULAR TOLERANCES ± — EXCEPT AS NOTED				
	—	1-11-45	TRACED	DRAWN BY R. MUELLER 2-18-44	<div style="text-align: center; font-size: 2em; font-weight: bold;">SPRING COMPRESSION</div>				
	A	1-26-45	TAB	CHECKED BY H. ENGBRETSON 11-21-44					
	B	6-28-45	TAB BLK	STRESS GK					
				DESIGN GK					
				GROUP ENGR J.W. SCOTT 11-7-44					
				APPROVED RAMSDEN 12-4-44					
				TRACED C. STONE 1-11-45					
				CHECKED B. MCKAY 1-15-45					
				APPROVED W. HODGSON 1-16-45					
			HEAT TREATMENT SPECIFICATION	ISSUE DATE					
			STEEL AN-QQ-H-201						
			ALUM ALLOY AN-QQ-H-186	PART NO OF OPP. HAND PART	3-32358				
				NONE					

BOEING AIRCRAFT COMPANY, SEATTLE, WASH.

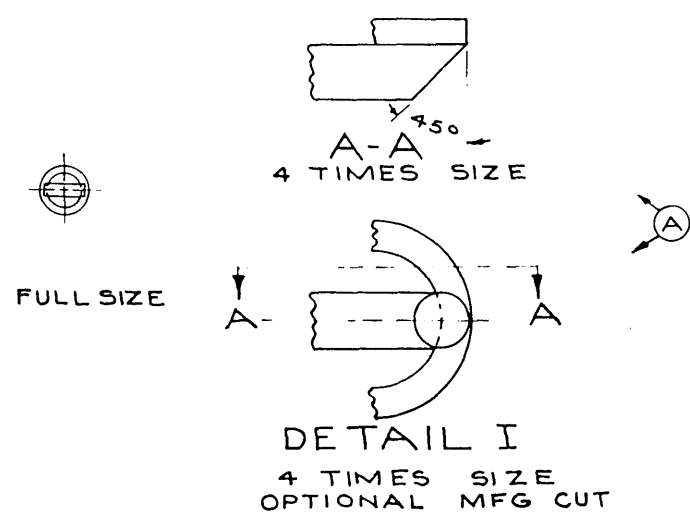
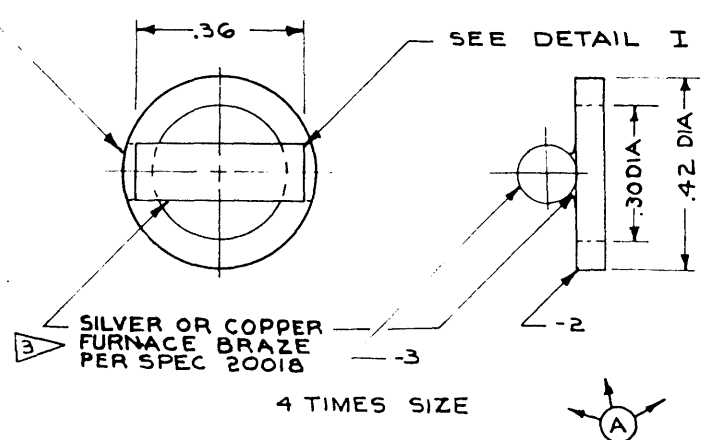
B-29 CHG. 612-1

AIRPLANE SERIAL NUMBERS

0233320

MARTIN	SEBAC	REBAC	WIBAC	PART NUMBER	MODEL	AIRP. SEC. NO.	USED ON DWG. NUMBER	QTY. PER AIRP.	FINISH SPEC.
		44-61910 TO 44-62328 INCL	45-21743 EON	3-33320-4	B29	46	15-18033	1	A
		44-62290 TO 44-62328 INCL		3-33320-4	B29	46	15-20824	2	B
	46-2 EON			3-33320-4	B-50	46	15-22700	1	C

OPTIONAL CUT, -3 FLUSH WITH .42 DIA OF -2, BOTH ENDS



- 4 BF 3-35 OR 135 AFTER WELDING
- 3 WELD PER BAC 5937 OPTIONAL OR SOLDER PER BAC 5024 OPTIONAL.
- 2 SHEET STEEL, 1020 OR 1025, SPEC AN-5-11 SPECIAL REQUIREMENT QUALITY OPEN HEARTH.
- 1 BAR STEEL, 1020 OR 1025, SPEC AN-QQ-5-646 SPECIAL REQUIREMENT QUALITY OPEN HEARTH.

	1	- 2		PLATE	.062	OR OPTIONAL			
	1	- 3		BAR	1/8 DIA	A			
USED TO INSTALL	USED ON	QTY.	PART NUMBER	NAME OF PART	ZONE CODE	SIZE-GAGE SECTION NO.	MATERIAL	H.T.	C.O.
MACHINE FINISHES SEE BAC 2040 BEND RADIUS PER BAC 2041 EXCEPT AS OTHERWISE NOTED	LETR DATE	CHANGE	B-PUNIT	SCALE NOTED	ALL DIMENSIONS IN INCHES TOLERANCES ± .02. EXC AS NOTED ANGULAR TOLERANCES ± 2° EXCEPT AS NOTED				
	A 10-45	G12-1		DRAWN BY R. MUELLER 11-7-44	TERMINAL ASSY. ANTENNA ATTACH.				
	- 2-16-45	TRACED		CHECKED BY H. ENGBRETSON 11-21-44					
	B 6-28-45	TAB BLK		STRESS CK					
C 8-21-46	TAB BLK		DESIGN CK						
				GROUP ENGR J.W. SCOTT 11-8-44					
				APPROVED W.E. RAMSDEN 12-4-44					
				TRACED J. CHIPMAN 2-16-45					
				CHECKED J. Chipman 2-17-45					
				APPROVED J. Miller 2-14-45					
				HEAT TREATMENT SPECIFICATION		ISSUE DATE		ISSUE NO.	
				STEEL	AN-QQ-H-201				
				ALUM ALLOY	AN-QQ-H-186				
BOEING AIRCRAFT COMPANY, SEATTLE, WASH.						PART NO OF OPP. HAND PART NONE		3-33320	

B-29 CHG 612-1

WATER TIGHT